

PowerMAN TechNote – CLOSEWINDOW Action

Release 5.1.3.0 December 2010

CLOSEWINDOW Action

The CLOSEWINDOW action may be used to close an application or dialog prior to suspend or immediately upon resume. This is most commonly used to work around legacy applications that fail to handle suspend gracefully or fail upon resume. In most cases the CLOSEWINDOW command has the same effect as closing the window manually or pressing the Cancel button. The exact behaviour is application specific and must be determined prior to use.

Tip: Windows allows each window to be assigned some text and a window 'class'. The window text is usually the message displayed in the title bar. The 'class' is application specific and is commonly used to group similar windows together or link them to the parent application. Each application may have many windows associated with it including some that are hidden.

The CLOSEWINDOW syntax is as follows:

CLOSEWINDOW [windowtext] [windowclass]

Where either [windowtext] or [windowclass] or both may be specified or include a wildcard (*) character.

To use the CLOSEWINDOW action proceed as follows:

1. Open the target application and ensure that it is in the correct state. For the purposes of this example the target application is 'Notepad'
2. Determine the window text (and optionally class) for the window you wish to close:

```
POWERMEN LISTWINDOWS
```

3. PowerMAN will display a list of available windows. For example:

```
;HANDLE TEXT CLASS
#10424206 "Start" "Button"
#9377002 "CiceroUIWndFrame" "CiceroUIWndFrame"
#429722238 "Example - Notepad" "Notepad"
#16978356 "Start menu" "DV2ControlHost"
#25890692 "Close" "VBBubble"
#15929788 "Jump List" "DV2ControlHost"
#7932092 "View Available Networks (Tooltip)" "VANUITooltip"
#20972380 "Task Switching" "TaskSwitcherWnd"
#19989242 "Show Results Pane" "OfficeTooltip"
#12453072 "Battery Meter" "SystemTray_Main"
```

4. Use the following command to close the specific window called 'Example – Notepad':

```
POWERMEN CLOSEWINDOW "Example - Notepad"
```

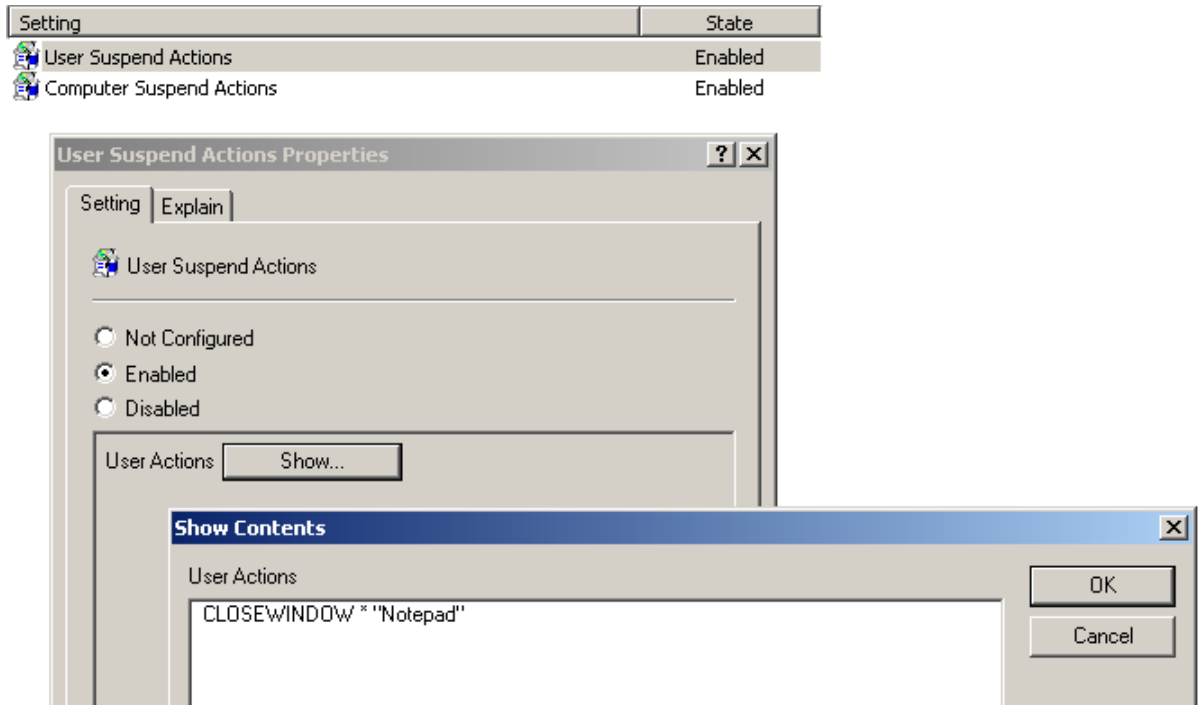
5. Use the following command to close all windows with the word 'notepad' in the title:

```
POWERMEN CLOSEWINDOW "*Notepad*"
```

6. Similarly, use the following command to close all windows with the class 'Notepad':

POWERMAN CLOSEWINDOW * "Notepad"

7. After confirming the correct command to achieve the desired behaviour add the appropriate CLOSEWINDOW command to the desired custom action policy:



Warning: Windows Vista and later allow some applications to be marked as 'High Integrity Processes'. The security feature prevents standard applications from interacting with these applications and is designed to prevent message injection attacks. CLOSEWINDOW may not be used to interact with a high integrity process. Please see the following Microsoft documentation for further details:

<http://msdn.microsoft.com/en-us/library/bb625962.aspx>