

PrintMAN Quick Start Guide

February 2013



Overview

The Data Synergy PrintMAN utility provides a reliable and consistent mechanism to configure the printers available at each Windows based workstation or physical location.

The tool is necessary because Microsoft Windows assigns shared printers on a per-user basis. This behaviour is often undesirable in roaming user environments such as school classrooms, hospitals, or computer labs. In such an environment it is typically desirable for one printer to be associated with a particular physical location or group of workstations.

PrintMAN provides a simple solution to ensure the desired printer is always the default printer. The software reduces wasted print jobs, paper and toner resources caused by accidental or unauthorised printing to the wrong printer:

- Assign default printer per workstation
- Assignment based upon printer name and/or port (including wildcard support)
- Deployed and configured via Group Policy, SMS or similar tool
- Optionally delete non-default network printer connections
- Supports Windows XP and later

This **Quick Start Guide** is intended to give System Administrators all of the information necessary to install the software on **a standalone PC**. The PrintMAN Administrators Guide provides a full product reference and also provides walk-through network installations using Windows Server Group Policy and Novell ZENworks

Prerequisites

PrintMAN client deployment requires two core files. These are the only files you need to perform an installation:



PrintMAN Setup.msi contains the PrintMAN program in a deployable form. This may be installed manually or via Windows GPO.



PrintMAN5.adm is an Administrative Template that is loaded onto the Windows Server and used to configure the PrintMAN or PrintMAN software. An **ADMX** file is also provided for use on Windows 2008 and later servers. The policy features available are identical. We recommend using the ADMX if supported.

Demonstration Mode and Product Keys

PrintMAN will operate without a product key (PID) for 7 days following initial installation. Whilst demonstration mode is active all PrintMAN features are available. When the demonstration period expires PrintMAN will enter reduced functionality mode. In this state the software will cease to modify any printer configuration but may still be used to verify and diagnose printer configuration.

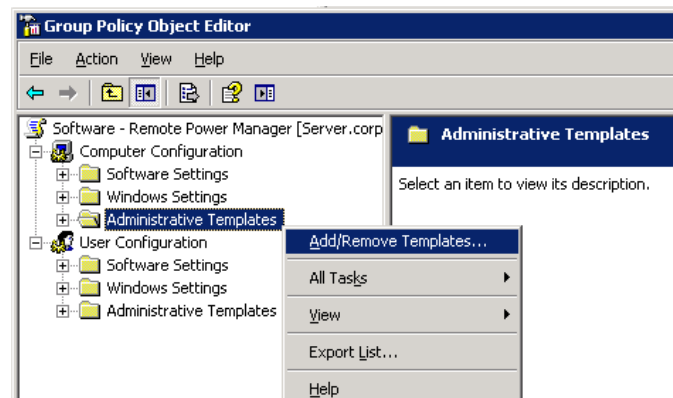
To operate PrintMAN outside of demonstration mode a registered organisation and product key are required. Instructions for configuring these settings are below.

Single PC Installation (Local Group Policy)

PrintMAN is primarily designed for network installation to a large number of workstations. However, sometimes it is desirable to configure PrintMAN on a standalone computer. This technique presented below is ideal for initial product investigation prior to a full scale roll-out. A very similar technique can be used for a network based deployment using Group Policy.

To install PrintMAN on a single PC proceed as follows:

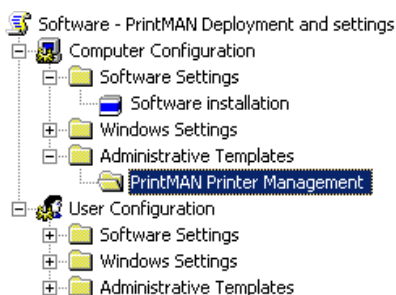
1. Use the `GPEDIT.MSC` command to launch the **Local Group Policy Editor**
2. Navigate to the **Computer Configuration / Administered Templates**, right click and select **Add/Remote Templates**:



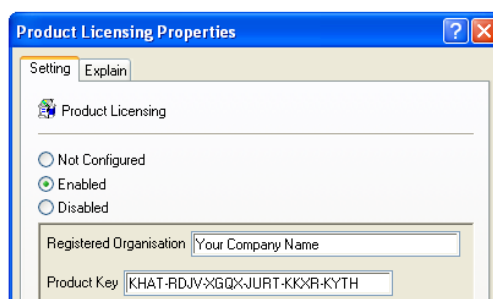
3. Click **Add** and locate the **PrintMAN.adm** file supplied. When this is completed click **Close**. It may be helpful to remove the other administrative templates present using the **Remove** button. These are not required for PrintMAN.

Tip: An **ADMX** file is also provided for use on Windows 2008 and later systems. The policy features available are identical. Instructions for using the ADMX file are in the PrintMAN Administration Guide.

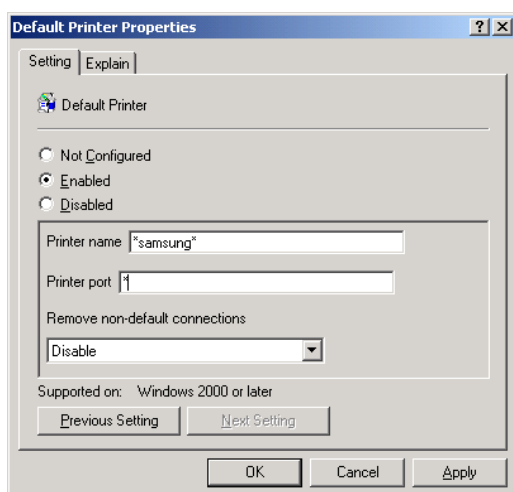
4. The **Administrative Templates** section should now contain a section for **PrintMAN Printer Management** (other sections may be present depending on configuration). On Windows Vista and later this is located under **Classic Administrative Templates**.
5. Select the **PrintMAN Printer Management** section.



6. The right hand pane displays a list of the available policy groups
7. If you have a product key:
 - i. Select **Product Licensing** and double click
 - ii. Select **Enabled** and carefully enter the **Registered Organisation** and **Product Key (PID)** supplied with the software. Click **OK**



8. Select **Default Printer** and double click
9. Enter a printer name and port. For instance:



Tip: The printer name and port settings support * and ? wildcards. We would recommend setting the port to * for a basic deployment. You can use the /FIND command to verify printer names.

To select the first Samsung printer set the printer name to *Samsung*.

If you do not use wildcards then the spelling of the printer name and port must be exact.

10. Set **Remove Non-Default Connection** to **Disabled**. Click **Ok**

PrintMAN Utility

11. Locate the supplied **PrintMAN Setup.MSI** file and double click on it. Follow the on-screen instructions to install the PrintMAN client software



12. Reboot the PC and logon
13. Confirm the PrintMAN software has made the specified printer the default printer

One method to do this is to use the PrintMAN command-line feature:

- i. Open a command prompt (CMD.EXE)
- ii. Navigate to the PrintMAN folder with:

```
CD \Program Files\Data Synergy\PrintMAN
```

Or on a 64-bit workstation running 32-bit PrintMAN with:

```
CD \Program Files (x86)\Data Synergy\PrintMAN
```

- iii. List the currently available printers with the command:

```
PRINTMAN /LIST
```

- iv. The current default printer is marked with a *

14. The default printer is reset for every user logon. Logout and try logging in as another user. Confirm the printer is correctly configured.

About Data Synergy



Data Synergy is a British company based in Sheffield. We have over 10 years' experience developing and supporting software solutions for enterprise PC deployment and management. We do not resell other vendors' products and do all our development, sales and support from our UK base.

Our products have evolved through listening to customer ideas and applying our unrivalled knowledge of PC internals. If you have a suggestion for a new product or feature we would love to talk to you.

Data Synergy UK Ltd
Cooper Buildings
Sheffield Technology Parks
Arundel Street
Sheffield
S1 2NS

Website: www.datasynergy.co.uk
Email: sales@datasynergy.co.uk
Telephone: 08456 435 035

Registered in England and Wales
Company Number 06682095
VAT Registration GB 939 7559 56